



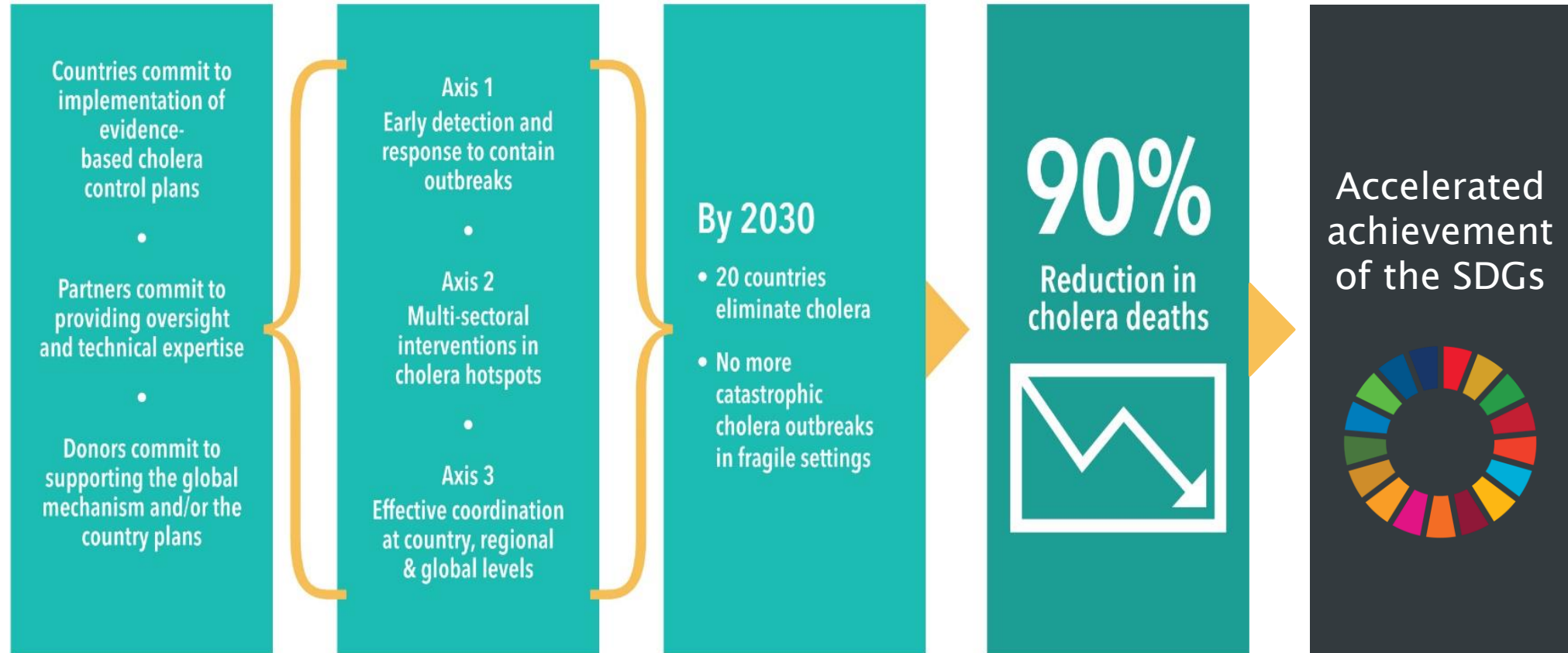
GLOBAL TASK FORCE ON  
**CHOLERA CONTROL**

# STRUCTURING THE GTFCC

FOR EFFECTIVE IMPLEMENTATION OF THE *ENDING CHOLERA ROADMAP*

Dr. Dominique Legros  
14 June 2018

# IMPLEMENTING THE GLOBAL ROADMAP TO END CHOLERA

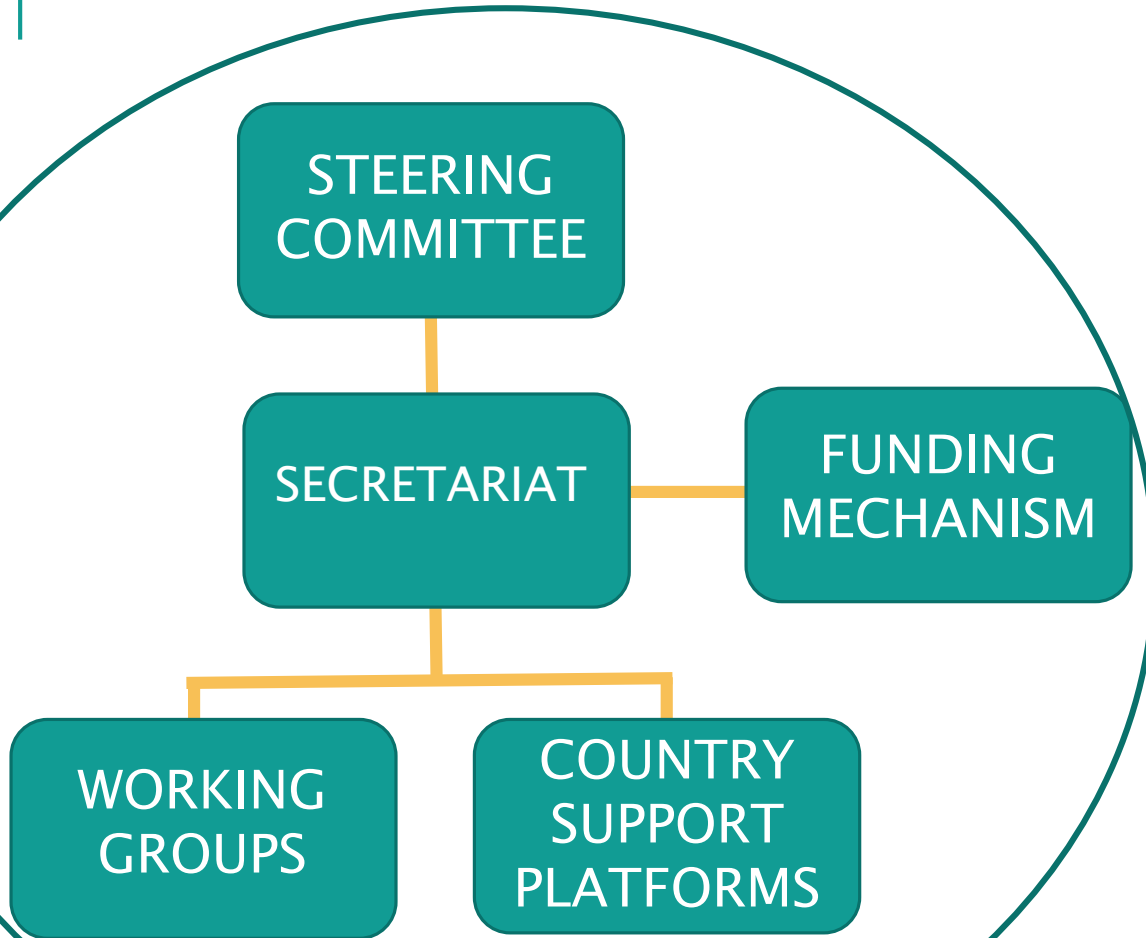




# RATIONALE

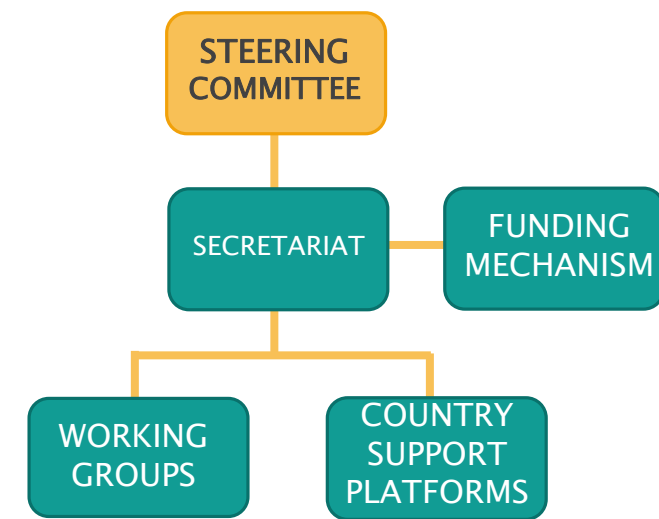
- GTFCC to develop and expand its capacities into a new phase
- Country specific support while continuing to work on global level advocacy and policy
  - Build country capacity to develop, fund, maintain and monitor all aspects of their CCPs
  - Facilitate high-level advocacy and resource mobilization
  - Implement the research agenda

# PROPOSED STRUCTURE OF THE GTFCC



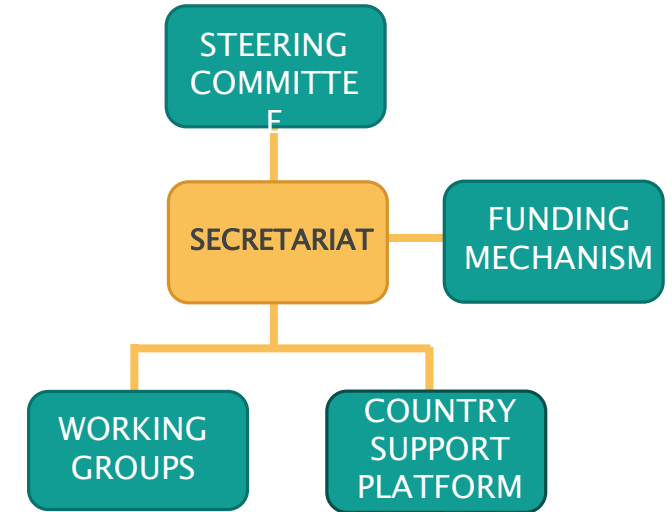
- Address the results of the review of the GTFCC conducted in 2017
- Provide small and flexible mechanisms to support countries
- Strengthen collaborations among GTFCC partner institutions

# STEERING COMMITTEE



- Will ensure **oversight and leadership** of the GTFCC as a whole
- Sets **global strategic direction**, reviews activities of the GTFCC, and ensures that activities align with the Global Roadmap
- Support and conduct **high level advocacy** to increase awareness and raise the profile of cholera as a public health problem
- 10 members representative of the GTFCC partners and constituencies or acting in their own capacity
- Chair of the Steering Committee also serves as Chair of the GTFCC

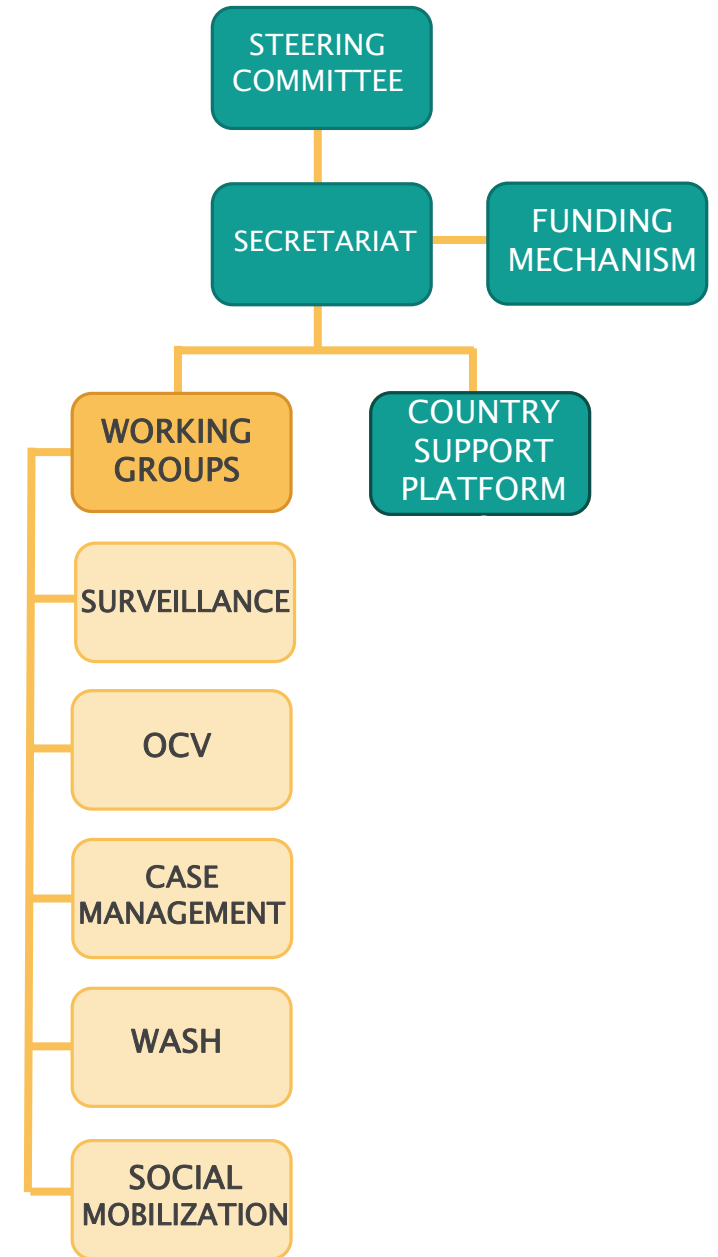
# SECRETARIAT



- **Coordination:** Ensures coordination between all bodies of the GTFCC
- **Monitor** progress against Global Roadmap, oversee administration of OCV stockpile, develop and oversee CCP Technical Review process
- **Reports to the SC**

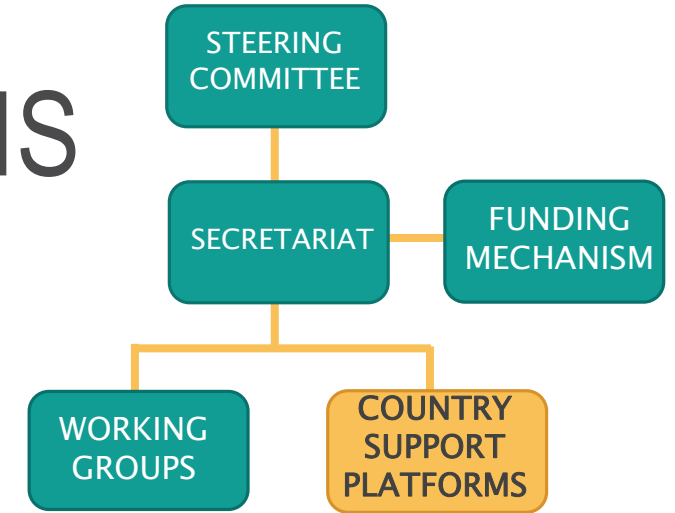
# WORKING GROUPS

- Develop all technical guidance
- Agree on standards, guidance and SOPs
- Identify research needs and agree on research agenda



# COUNTRY SUPPORT PLATFORMS

- Managed at a global level and hosted by GTFCC partner institutions to provide:
  - Countries technical support (“Technical Support Platform”), for the deployment of HR –including “cholera coordinators” in country– and commodities
  - Country capacity building, information sharing and knowledge management (“Platform for Knowledge Transfer”)
  - Implementation of Research and M&E (“Research Platform”)





# FUNDING MECHANISM

- Hosted and managed by a GTFCC partner institution
- Includes financing streams for:
  - In-country cholera-specific interventions that are not part of the mandate of WaSH and Gavi
  - Funding gaps that may prevent the full implementation of the CCPs
  - Coordination mechanism, advocacy and communication function (<10% of total)

