

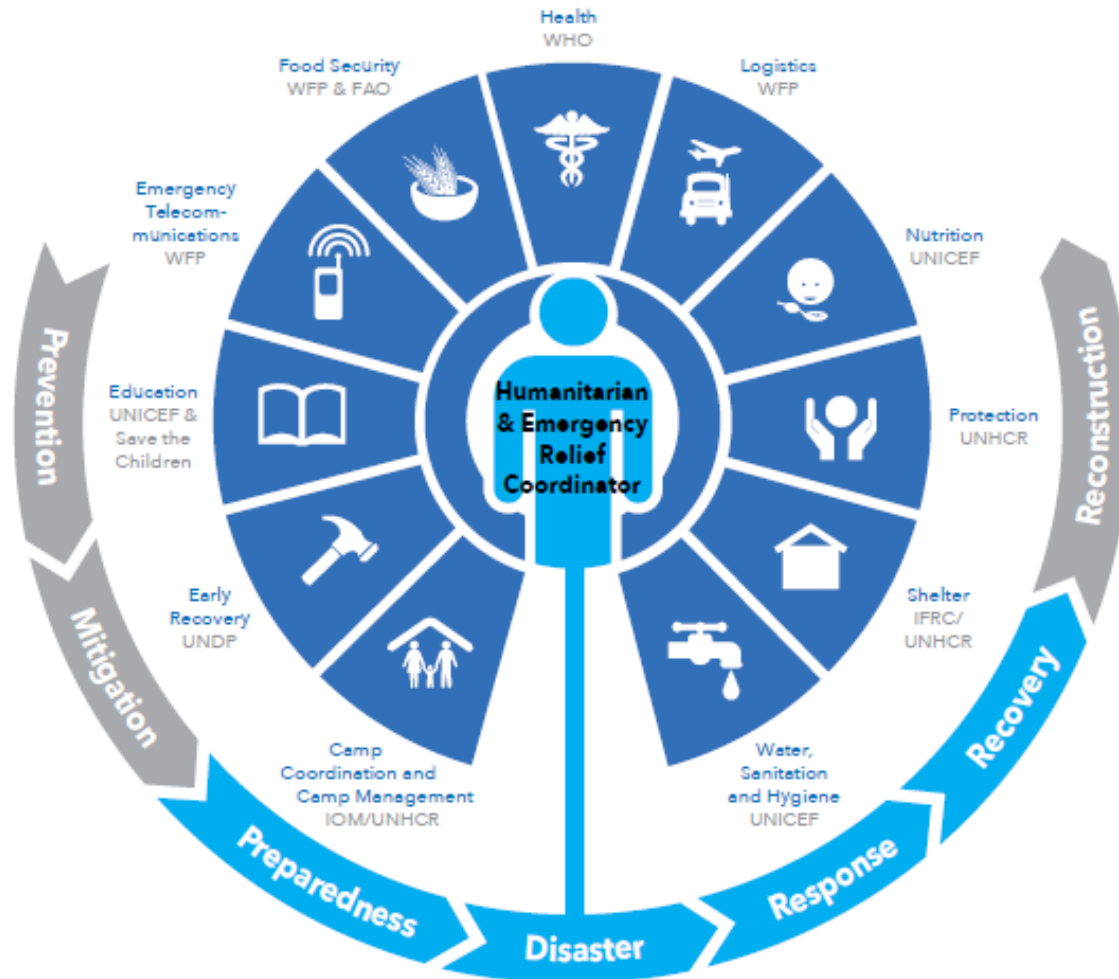
# WASH CLUSTER

COORDINATING Humanitarian WASH  
Response in Humanitarian situation

Global WASH Cluster



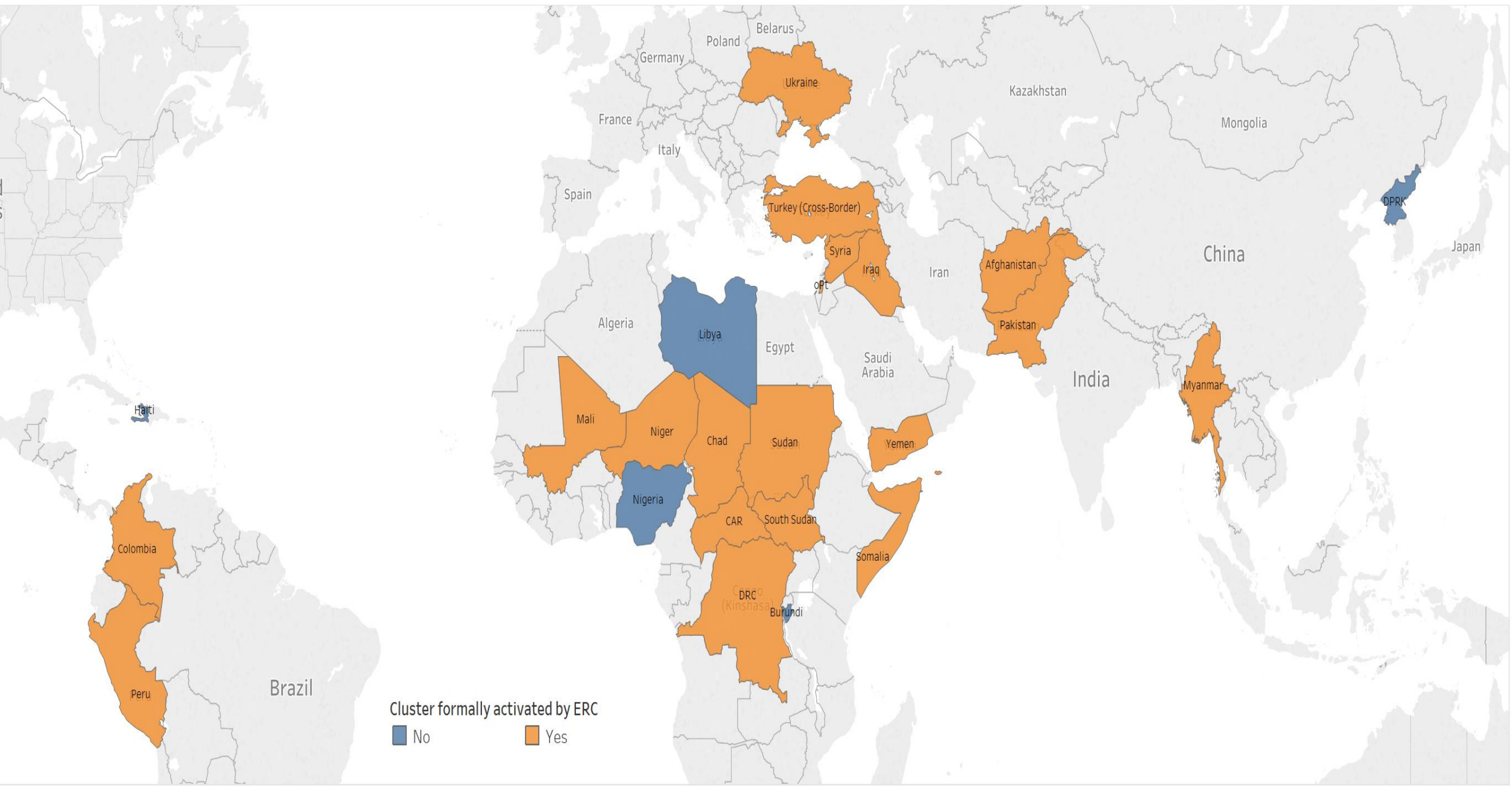
# IASC cluster approach is activated for leading the humanitarian coordination



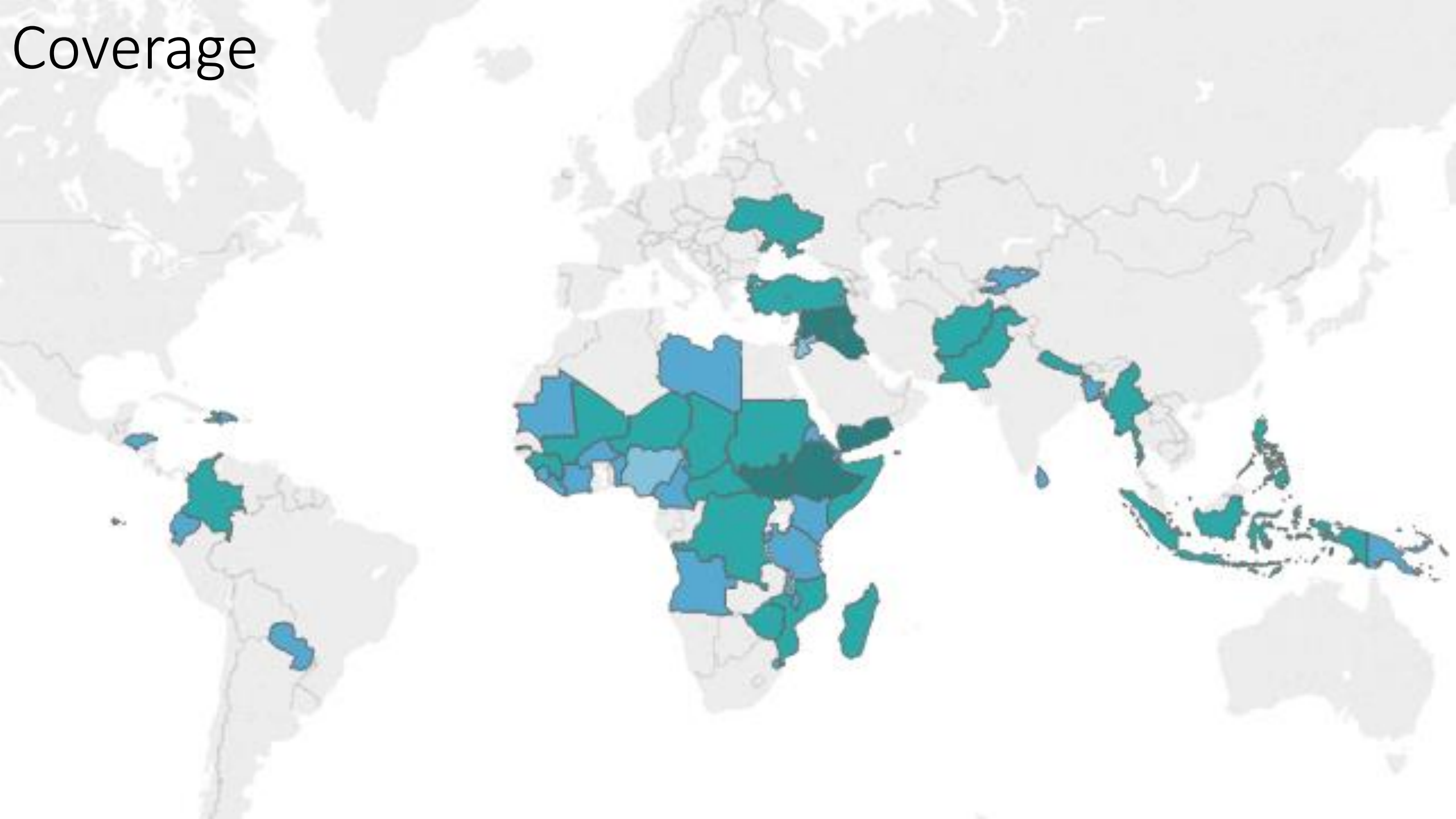
The **IASC Cluster Approach** ensures that international responses to humanitarian emergencies are:

- predictable
- accountable
- clear leadership
- division of labor between organizations & sectors

# WASH Clusters vs Sectors - December 2017



# Coverage



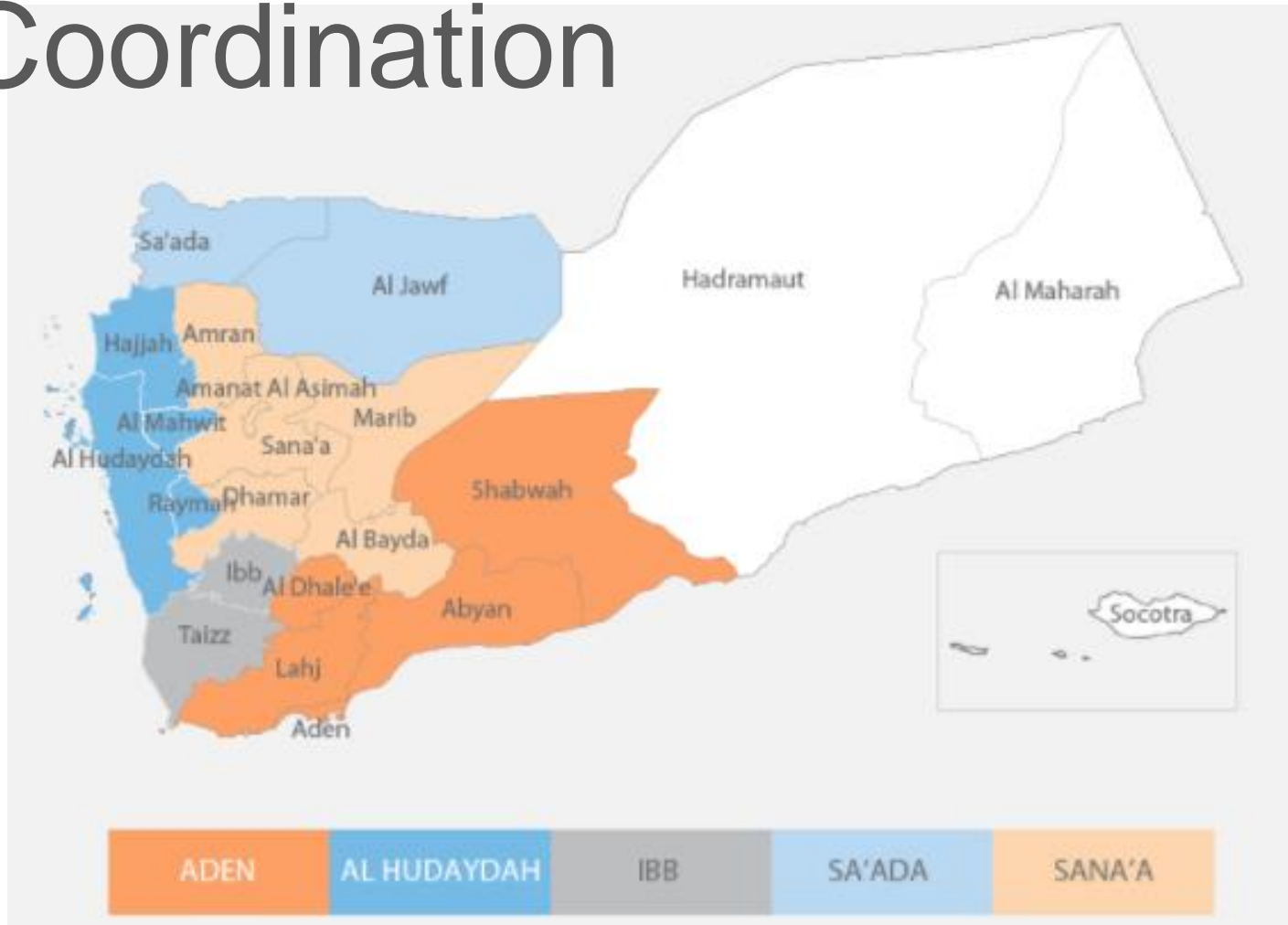
## Supporting Service delivery

1. Providing a platform
2. Developing mechanisms to eliminate duplication of service delivery

... has developed a **hub-based, sub-national**

**coordination system** with cluster focal points replicating the structure of the national level

# Coordination



The **challenges** of this type of include:

- Majority of the coordinators are **double-hatting**
- Coordinators are **untrained** in the cluster approach

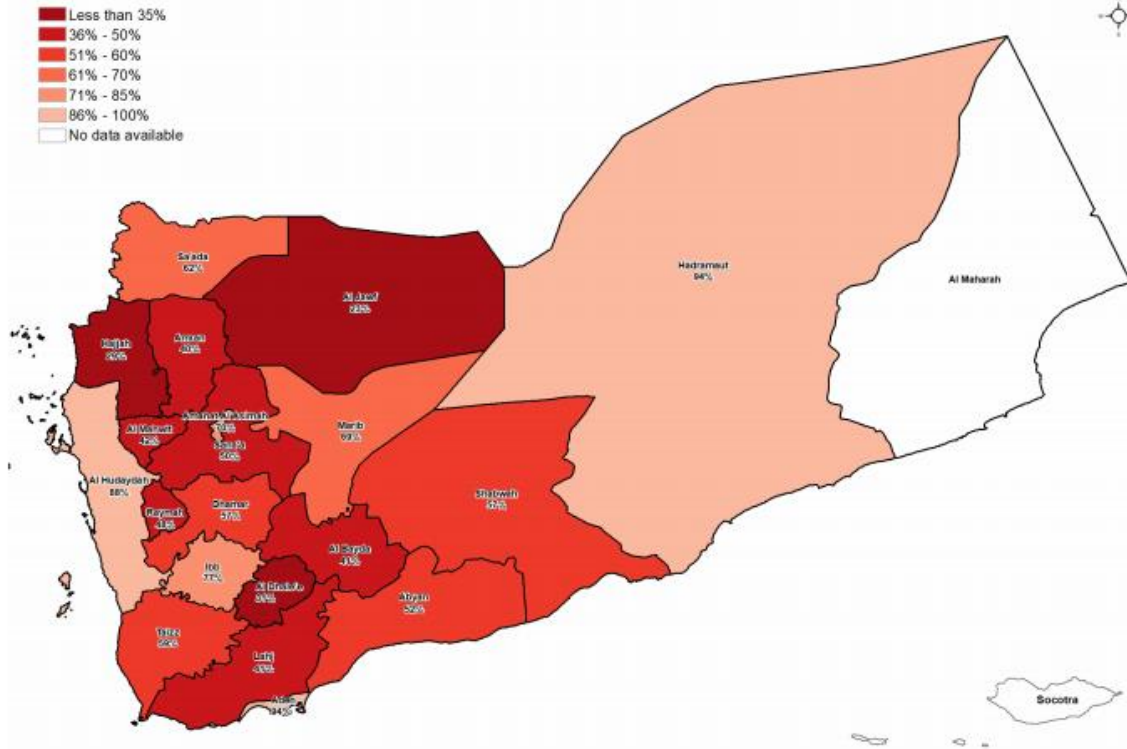
# Informing strategic decision making of the HC/HCT

1. needs assessments and analysis of gaps to inform the setting of priorities
2. Identifying and finding solutions

## WASH Figures

## WASH Needs

Map 1. Households with access to improved water sources in 2016, by governorate



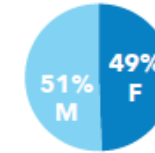
NEED (TOTAL)

14.5M

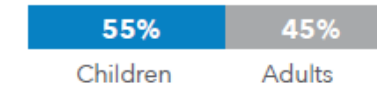
NUMBER OF PEOPLE IN NEED (ACUTE)

8.2M

BY SEX



BY AGE

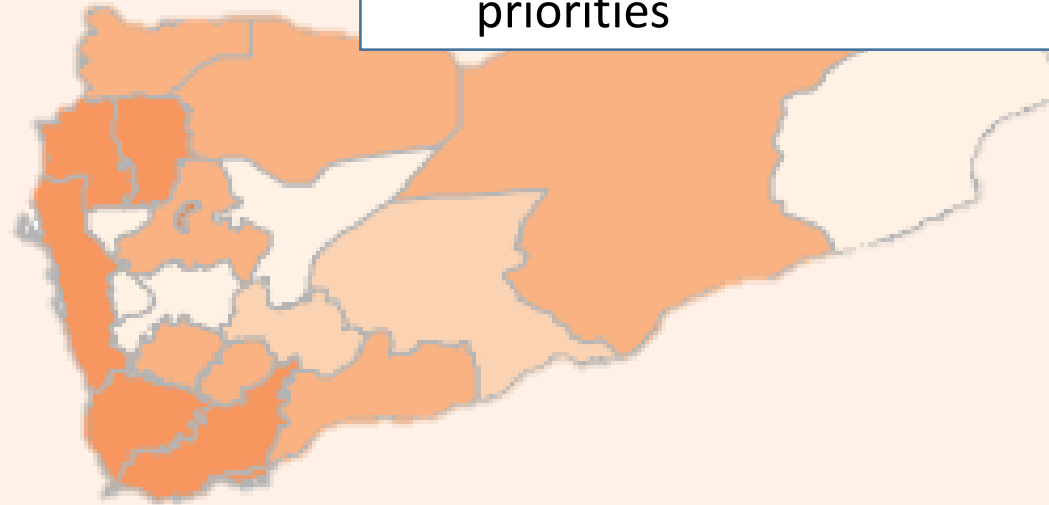


**Safe drinking water** is a major priority for IDPs, returnees and host communities.

**Long term displacement** combined with **high concentration of IDPs** in certain locations are placing exceptional pressure on **scarce water sources**.

## Planning and strategy development

1. Sectoral plans, objectives and indicators, common standards and guidelines
2. Funding requirements, set priorities



# Response

## WASH

# OF PARTNERS



REQUIREMENTS (US\$)



PEOPLE TARGETED



### WASH OBJECTIVE 1

- 1 Restore or maintain sustainable water and sanitation systems to improve public health and resilience.

### WASH OBJECTIVE 2

- 2 Provide emergency WASH assistance to the most vulnerable so as to reduce excess morbidity and mortality.

### WASH OBJECTIVE 3

- 3 Ensure sufficient coordination and capacity at the national and sub-national levels.

# Minimum packages for WASH

## Minimum package – AWD preparedness / prevention

---

*Main focus on sustainable access to WASH services*

- Water
  - Operational support, spares and equipment
  - Water quality surveillance and water testing
  - Rehabilitation of water schemes in areas with high AWD
  - Provision of jerry cans and chlorine tablets
- Sanitation
  - Operational support to waste water treatment
  - Demand driven approach to latrine construction (through community mobilization approaches) in areas with high AWD
- Hygiene
  - Provision of consumable hygiene kits
  - Training of CHVs on hygiene messages
  - Hygiene promotion / community mobilization

## Minimum package – IDP / returnee response

---

- Water
  - Providing community water points
  - Water trucking for IDPs for maximum coverage
  - Rehabilitation of water schemes in areas with high AWD
  - Water quality monitoring and promotion
- Sanitation
  - Rehab / construction of emergency handwashing facilities for IDPs in high density areas (desludging)
  - Cleaning campaigns for IDPs in high density areas
- Hygiene
  - Provision of basic hygiene kits with soap
  - Training of CHVs on hygiene messages
  - Hygiene promotion / community mobilization

## Minimum package – food security and nutrition

---

*Main focus on sustainable access to WASH services*

- Water
  - Rehabilitation of water schemes in areas with high SAM prevalence
  - Provision of jerry cans and water filters to SAM HHs
- Sanitation
  - Demand driven approach to latrine construction (through community mobilization approaches) in areas with high SAM prevalence
- Hygiene
  - Provision of consumable hygiene kits to SAM HHs
  - Training of CHVs on hygiene messages
  - Hygiene promotion / community mobilization in areas with high SAM prevalence



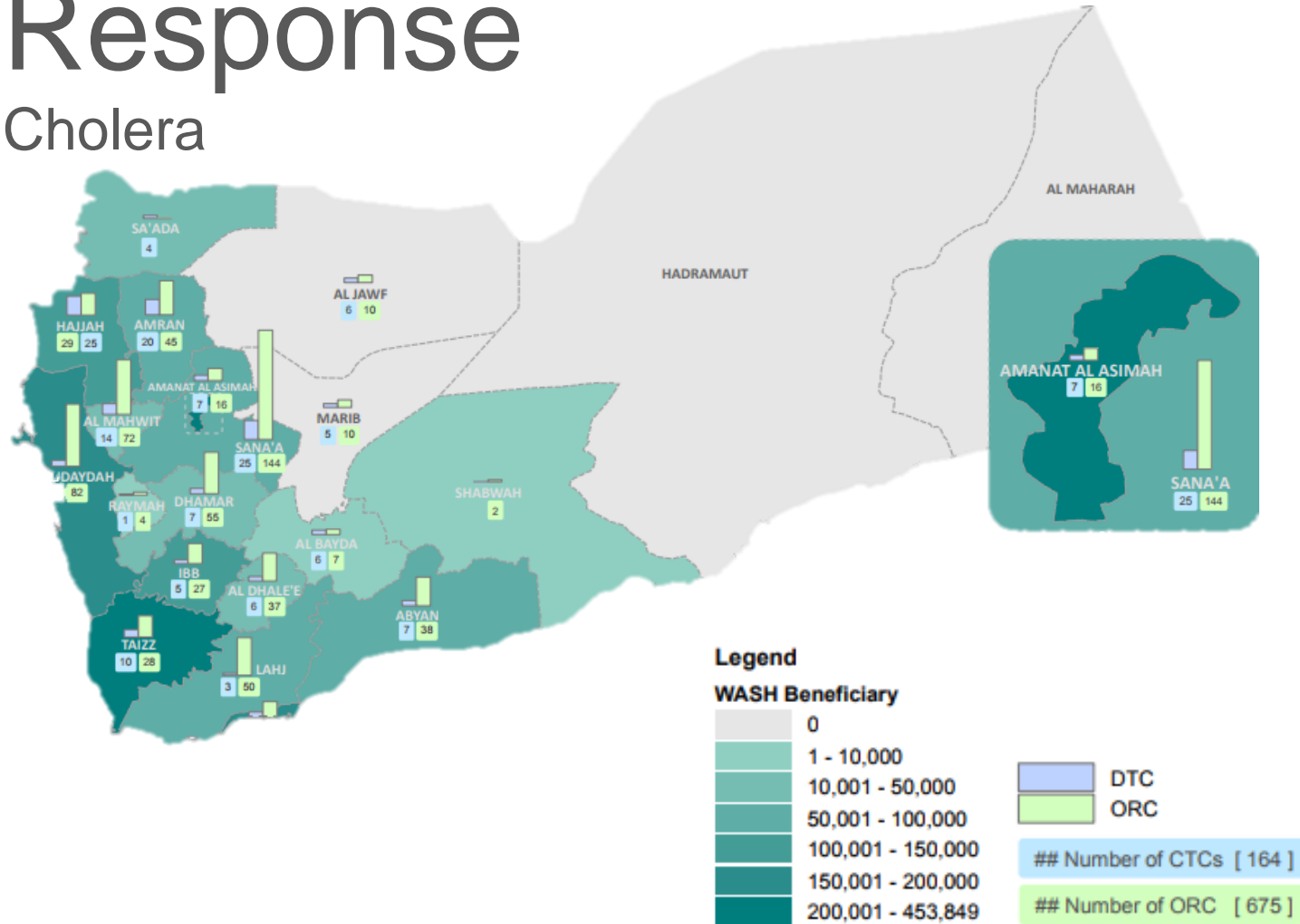
## Monitoring and reporting

1. Monitoring and reporting on activities and needs
2. Measuring progress
3. Corrective action

# Response

## Cholera

emen WASH Cluster has reached that **9,855,039** people have been reached since April 2017 with a **WASH response** to the **cholera outbreak**



This includes WASH partners supporting **Infection Prevention & Control** activities at the **4,334 Diarrhea Treatment Centers (DTCs)**

# *IASC core functions*

*Building national capacity in preparedness and contingency planning*

1. National contingency plans
2. Cluster roles and responsibilities defined and understood
3. Early warning reports shared

*Advocacy*

1. contributing key information and messages to HC and HCT messaging and action

*Accountability to Affected Population*

1. Consult and involve affected people in decision-making
2. Mechanisms to receive, investigate and act upon complaints
3. Issues relating to PSEA

# Thank you

---

