



GLOBAL TASK FORCE ON
CHOLERA CONTROL

Ending cholera : a global roadmap to 2030

Dr Dominique LEGROS, WHO, April 2018



End Cholera as a
public health threat in
up to 20 countries;
reduce deaths by 90%
by 2030

How

The bridge

Country
level

AXIS 1

Early detection and immediate response to outbreaks

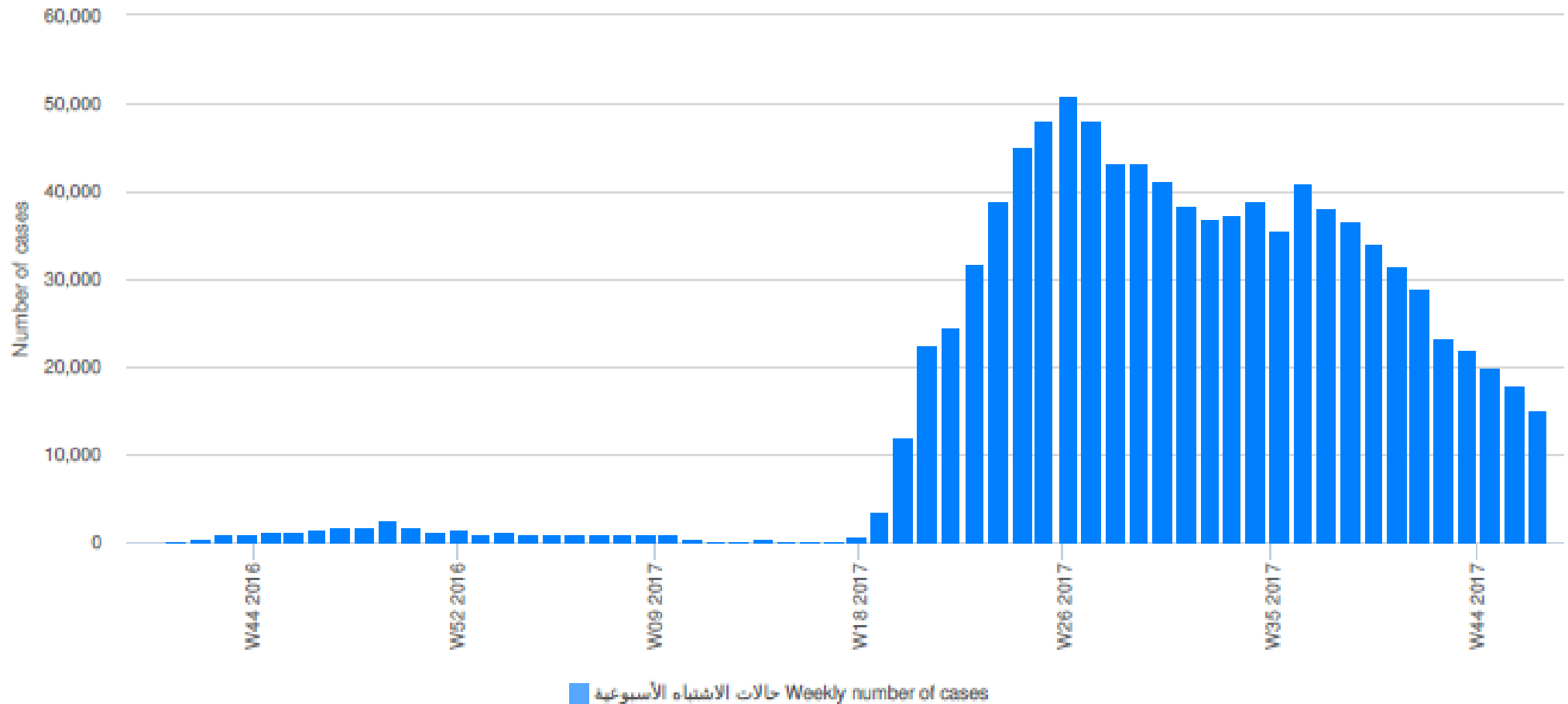
Early detection and rapid response to ensure immediate containment of outbreaks



OUTBREAK IN YEMEN, 2017

الشكل (1) المنحنى الوبائي على المستوى الوطني

Figure 1 | Epidemic curve (Country)



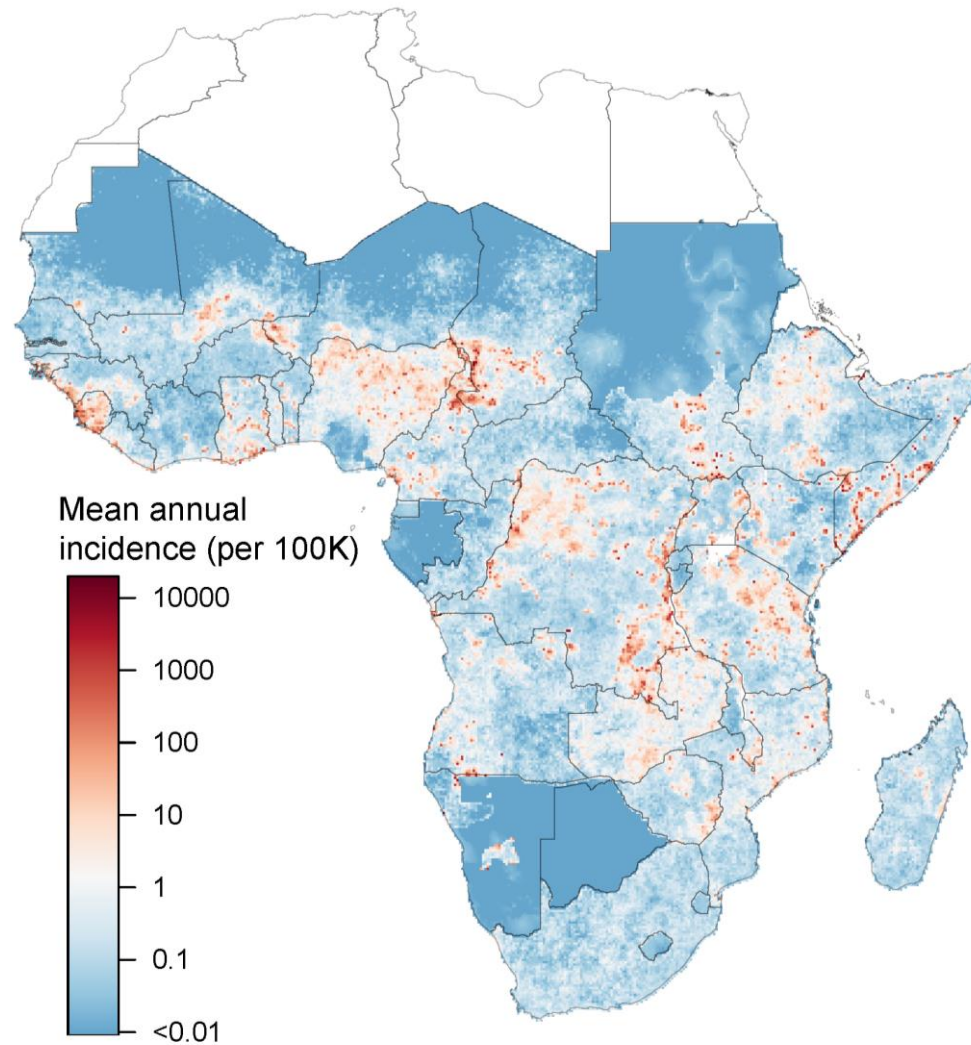
AXIS 2

Hotspot approach

Most cases of cholera happen in highly endemic areas—called “hotspots”—where predictable outbreaks of cholera occur year after year.



CHOLERA HOTSPOTS IN AFRICA 2010-2016



Source: A Azman and J Lessler, Johns Hopkins

AXIS 3

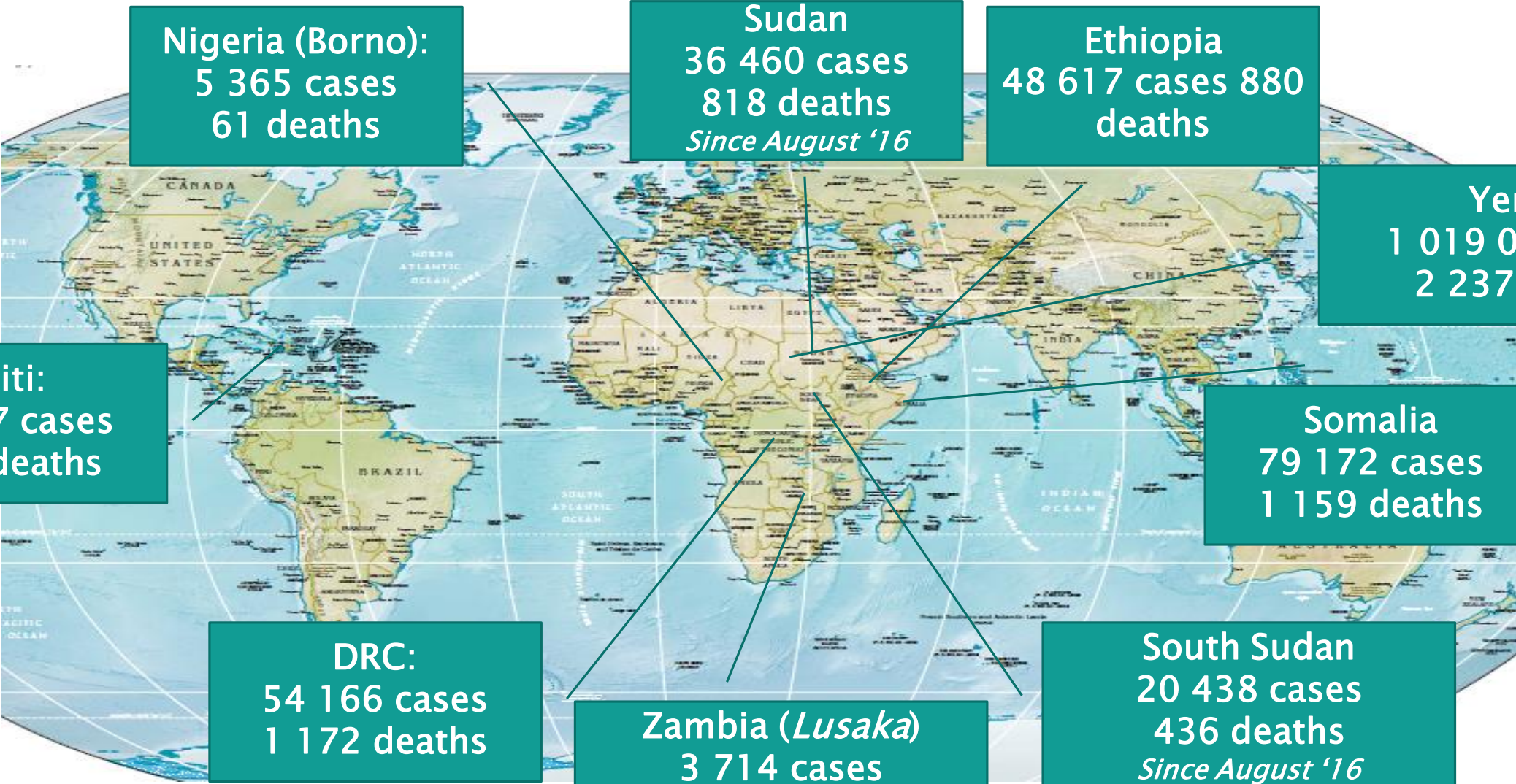
GTFCC: NETWORK OF INSTITUTIONS WITH THE AIM TO CONTROL AND PREVENT CHOLERA GLOBALLY



Cholera kills an
estimated **95,000**
people per year and
sickens more than
2.9 million more



MAJOR CHOLERA OUTBREAKS 2017



Nigeria (Borno):
5 365 cases
61 deaths

Sudan
36 460 cases
818 deaths
Since August '16

Ethiopia
48 617 cases 880
deaths

Yemen
1 019 044 cases
2 237 deaths

Haiti:
13 747 cases
159 deaths

Somalia
79 172 cases
1 159 deaths

DRC:
54 166 cases
1 172 deaths

Zambia (*Lusaka*)
3 714 cases
75 deaths
To Feb. 07 2018

South Sudan
20 438 cases
436 deaths
Since August '16

The cholera risk is rising



Climate Change



Population growth



Urbanization

METHODS OF CONTROL ARE WELL KNOWN

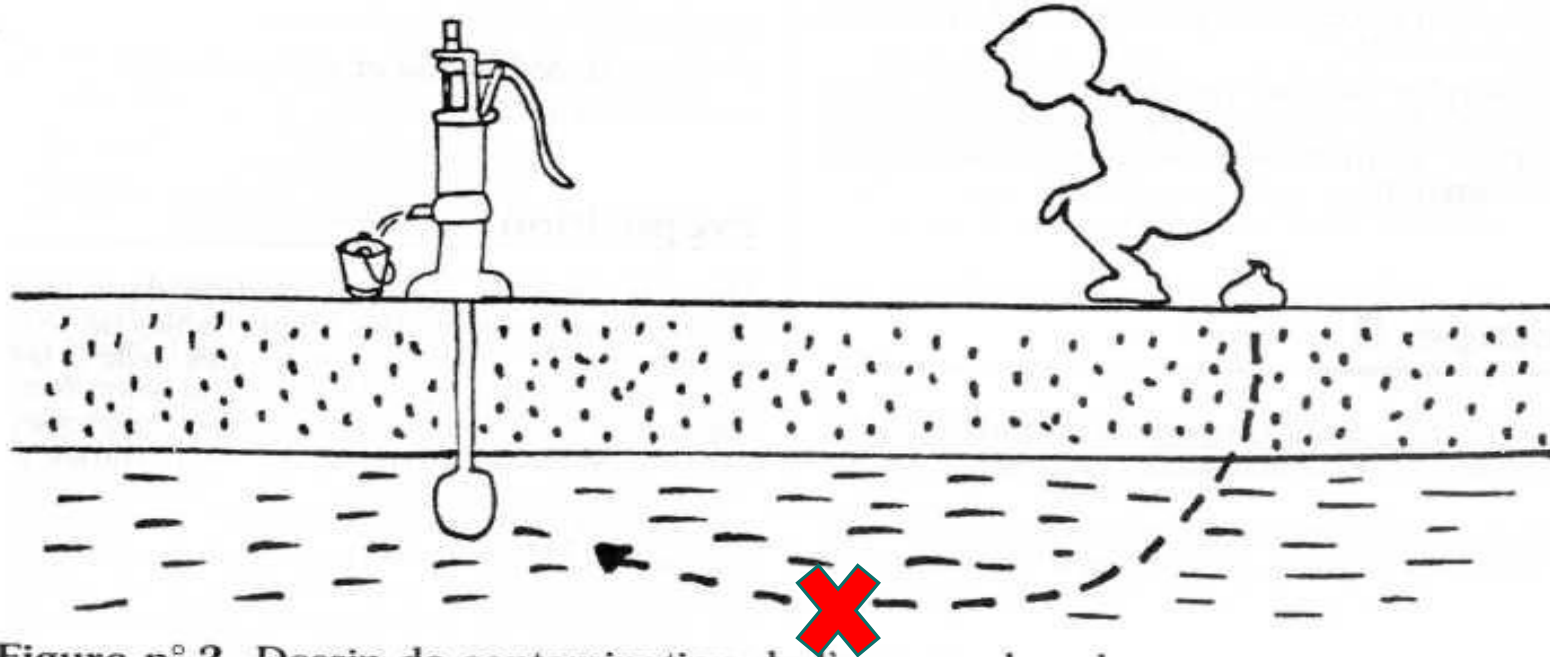


Figure n° 2. Dessin de contamination de l'eau par le sol

Source: Belec M, Hentgen V, Jauréguiberry S. Maladies du péril fécal et leur prévention. *Développement et Santé*. n°148,149, 150, août, octobre, décembre 2000

Methods of control are known since the 50's ...
... of the 19th century



Implementing the Roadmap in countries

The Global Roadmap will encourage a **phased approach** that takes into consideration the current conditions on the ground, helping each country to set a **realistic and achievable goal** for cholera control.



From preparedness and response to prevention and control

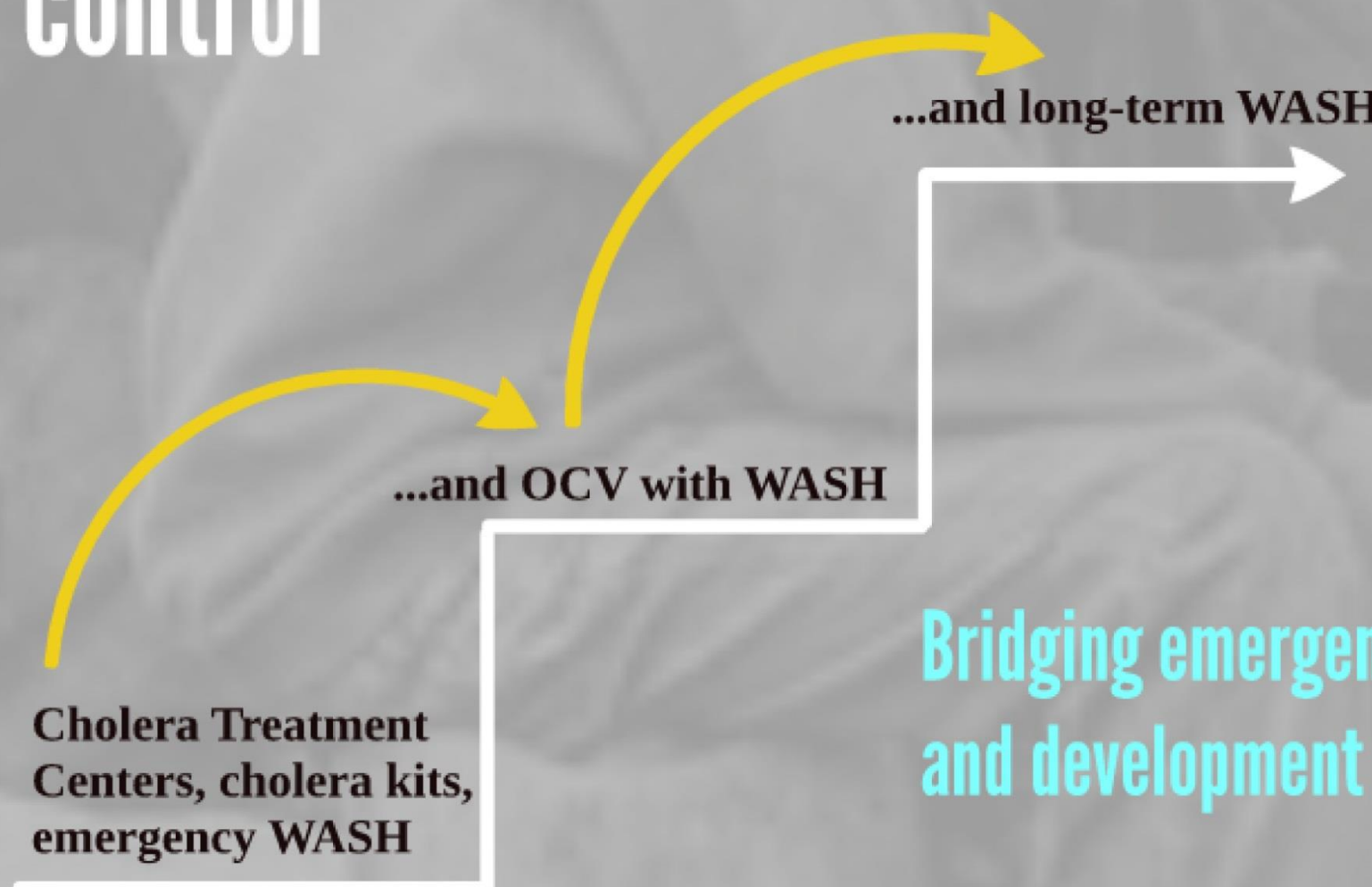
Treating patients alone has limited impact on transmission

Cholera Treatment Centers, cholera kits, emergency WASH

...and OCV with WASH

...and long-term WASH

Bridging emergency and development



THE WAY FORWARD

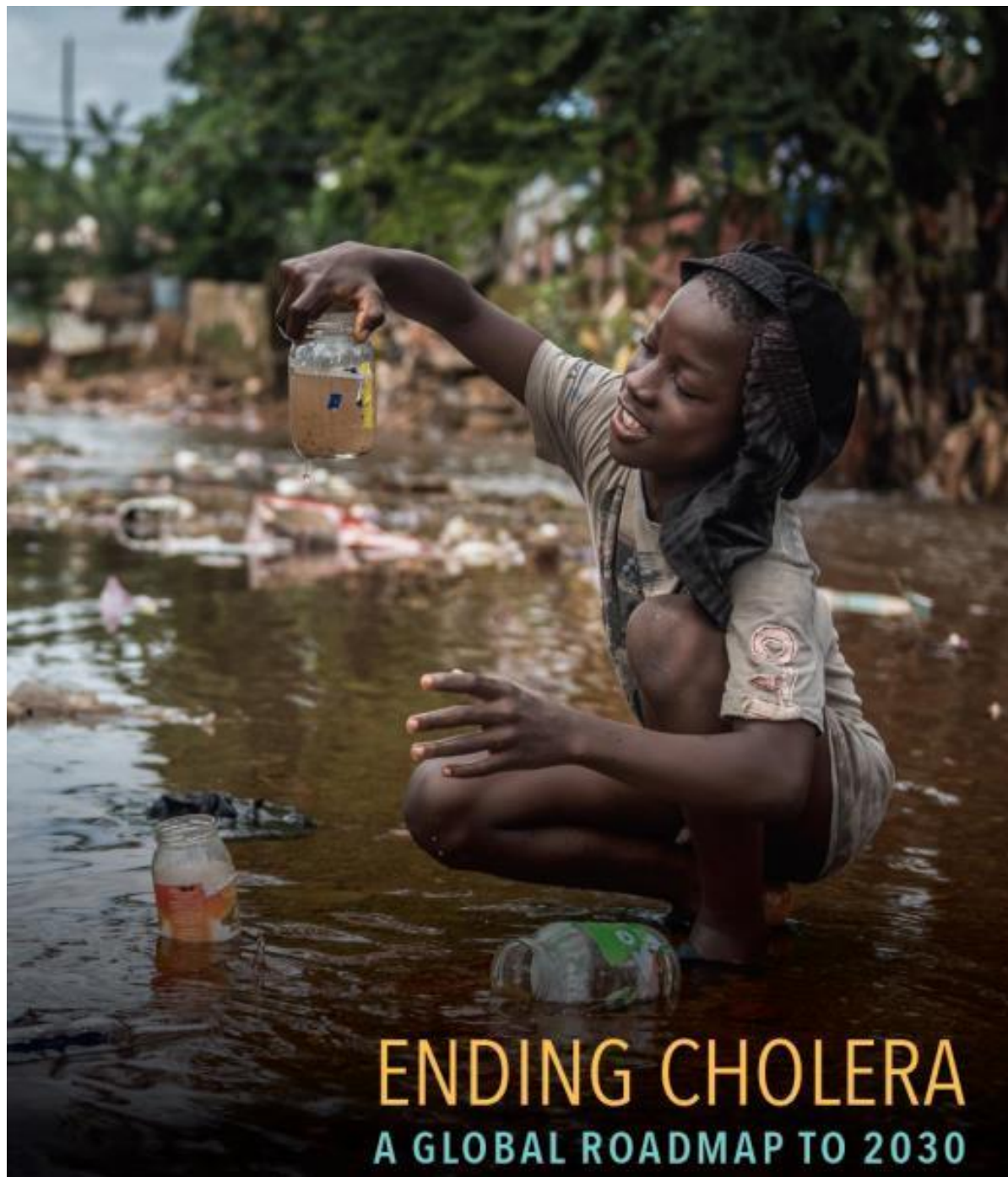
Implement the roadmap at country level

- Get first a few countries to engage and support them in developing and implementing their control / elimination plans

Support the countries with technical and financial resources («packages»)

Advocacy and communication

- Further engage with donors and partners
- WHA resolution and side event
- Cholera investment case
- GTFCC steering committee and operational platform



THANK YOU!

Together, we can
#EndCholera

Contact

GTFCCsecretariat@who.int



GLOBAL TASK FORCE ON
CHOLERA CONTROL