



unicef 
for every child

Risk Communication and Community Engagement

Eva Niederberger, OXFAM and Ketan Chitnis, UNICEF

13 February 2019

Strengthening community engagement post West Africa Ebola outbreak...

Improving interagency coordination

(UNICEF WHO IFRC Oxfam CDC USAID DFID Wellcome Trust and more)

Prepositioned evidence and social science data

Refine risk comm & community engagement interventions

Build surge mechanisms & internal C4D capacity

Re-define RCCE inter-agency strategic areas



Risk Communication and Community Engagement Outcomes

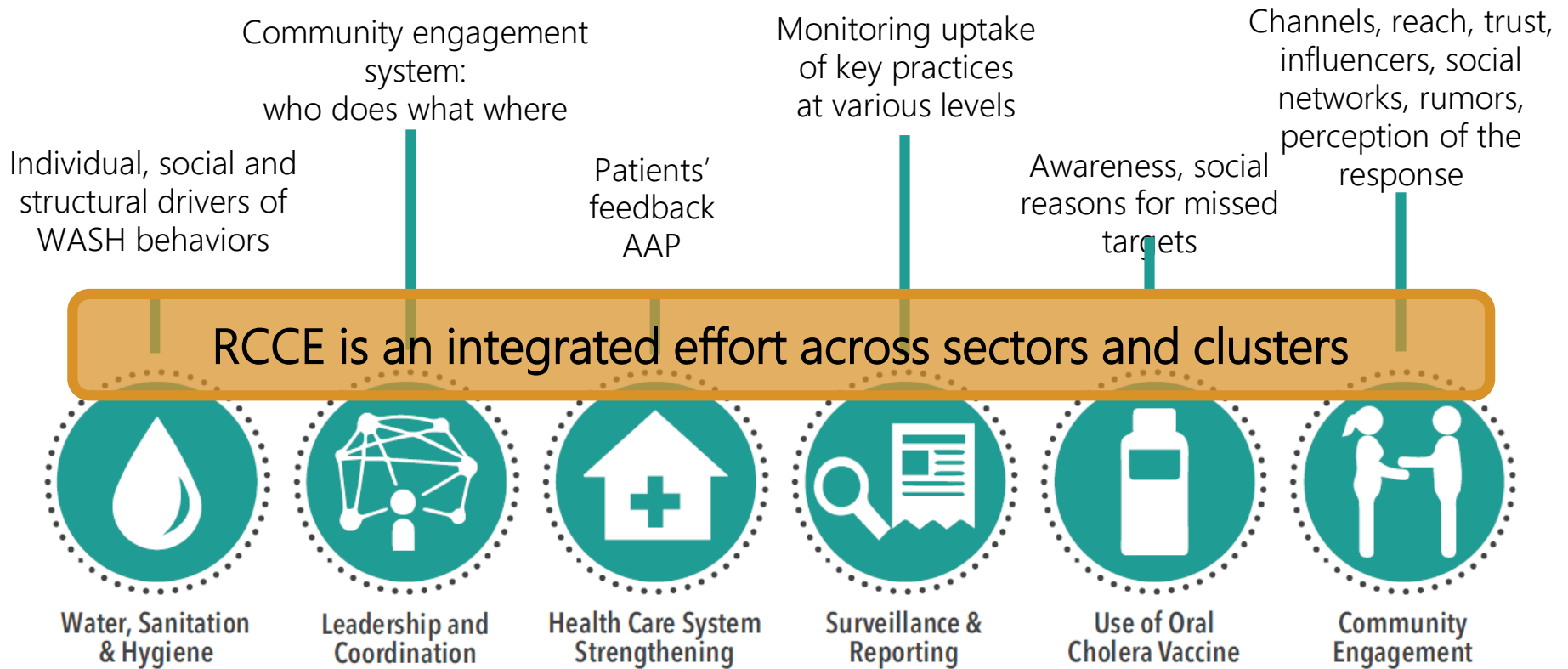
**Behaviour change
– prevention &
care seeking**

**Provider behavior
and interpersonal
communication**

**Community
feedback &
accountability**

**Community
participation and
ownership**

**Public
communication &
advocacy**



MULTI-SECTORAL INTERVENTIONS IN CHOLERA HOTSPOTS

BEHAVIORAL DATA NEEDED ACROSS THE PACKAGE

Yemen– remote programming & preparedness

‘Classification’ system of active, inactive, silent areas for cyclical cholera outbreaks (2019):

- contextual understanding
- training of community focal points, stockpiling items
- local level preparedness and contingency planning based on risk analysis
- use of mobile technology



Mobile technology for community feedback in outbreak responses

Ebola response DRC 2018- 2019

- Development of feedback app to capture qualitative information on beliefs / perceptions and rumours
- Real-time analysis of behavioural information > barrier / enabler analysis for behaviour change to adapt programme activities on ongoing basis
- Inform other response actors / external coordination (social science group)

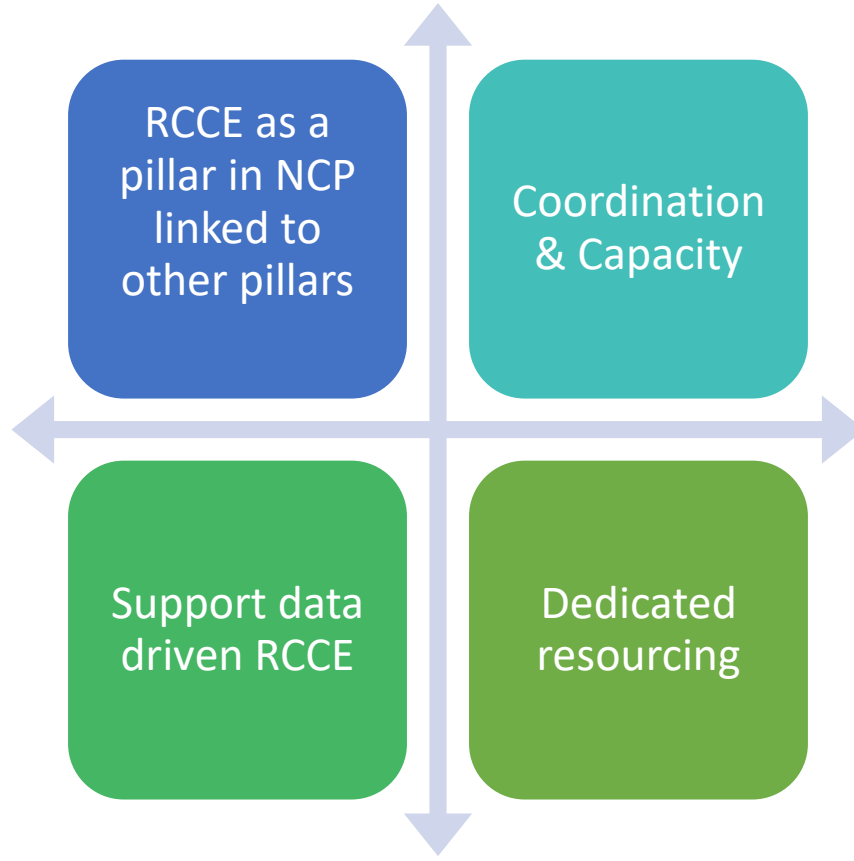


Challenges



Key asks

Discussion on RCCE as part of GTFCC tomorrow on strategic positioning and areas of guidance for NCP in the Framework



unicef 
for every child

