



GLOBAL TASK FORCE ON  
**CHOLERA CONTROL**

**ZIMBABWE**: UPDATES, CHALLENGES AND  
SUPPORT REQUIRED FOR NATIONAL  
CHOLERA CONTROL PLANS (NCPS)

WASH Working Group Meeting  
**Brighton Sibanda**  
Tuesday, 12<sup>th</sup> February 2019

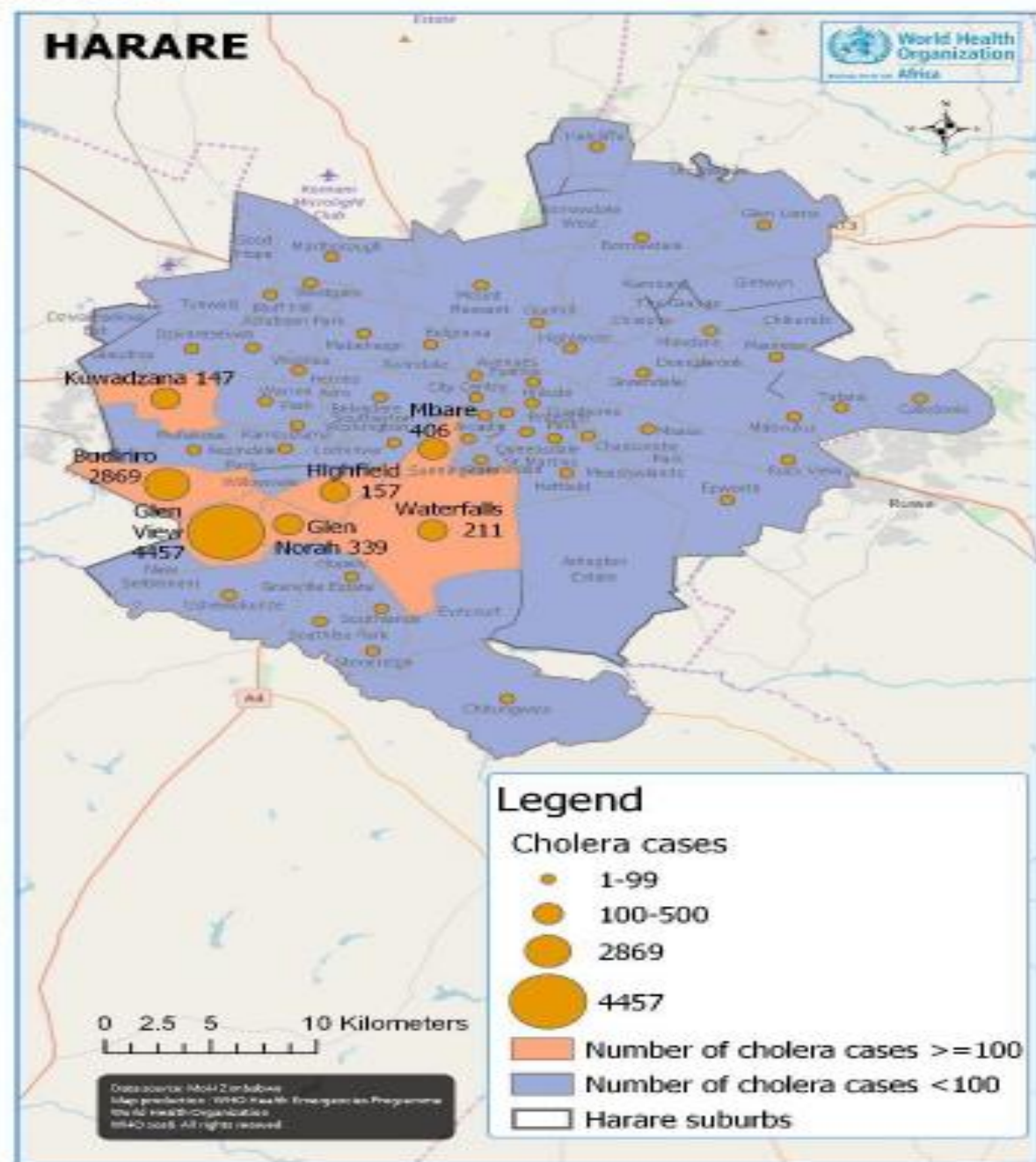
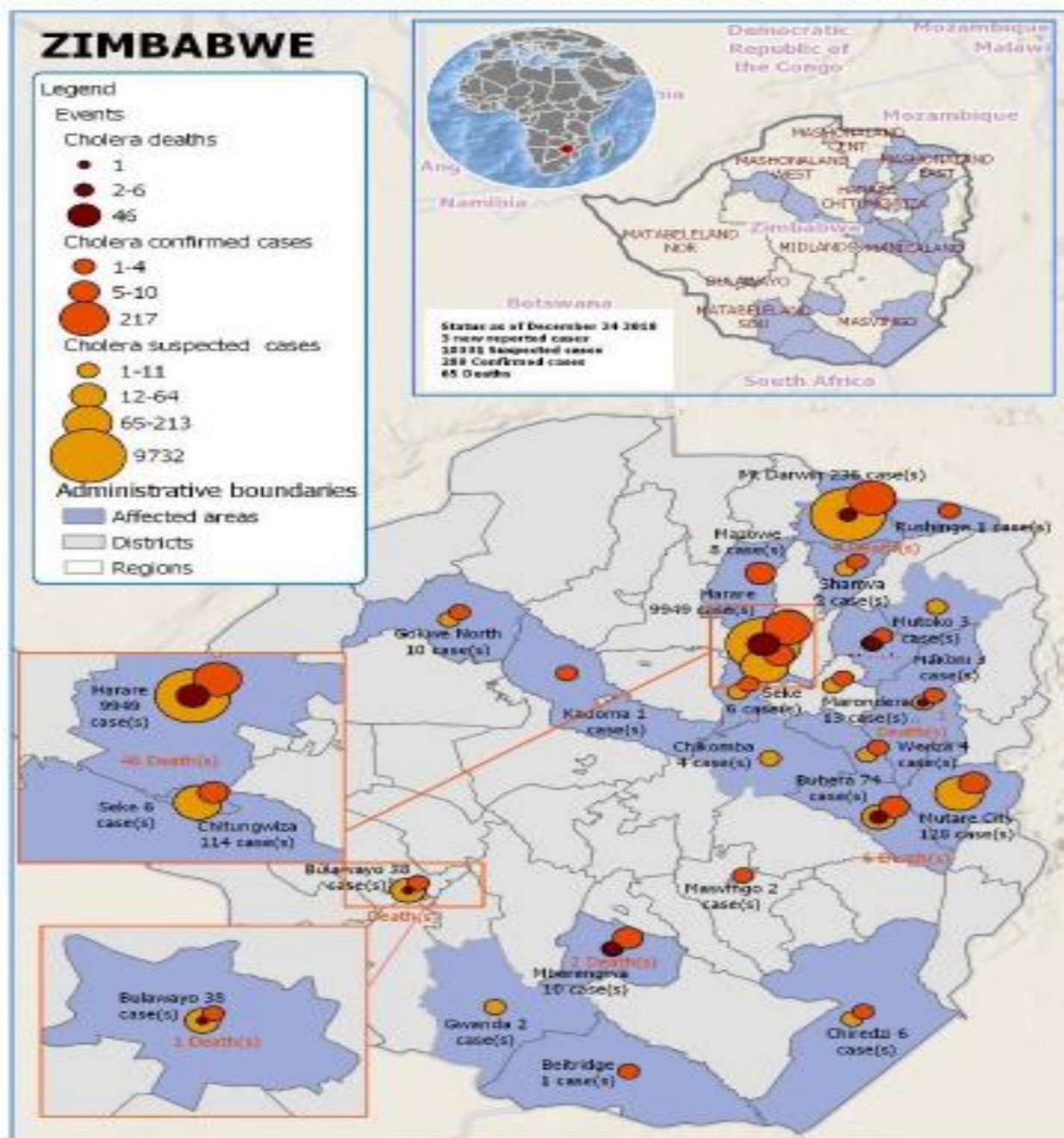
# OVERVIEW OF SITUATION

- The country has an estimated population of 14 million and 10 provinces, the first outbreak in 1973
- Significant outbreaks since then- 1992-93, 1999, 2002, 2008-09, 2010-11 and 2018-19
- 15 outbreaks in the last 20 years
  - 2008-09, 100 000 cases (4000 deaths) which is the higher number in Africa and 2018-19 more than 10 000 cases (68 deaths) from 9 provinces
    - Started in September 2018, Harare is the most affected, cases are concentrated in Southwest suburbs (map) as in 2008-09
    - In upcountry most affected areas analyzed with 1998-2018 (see map)
    - Zimbabwe used to have a high level of services but Water and Sanitation Services decline since 2 decades, SDG goes down, due to economic situation which is not fixed yet.



MAP\_1:

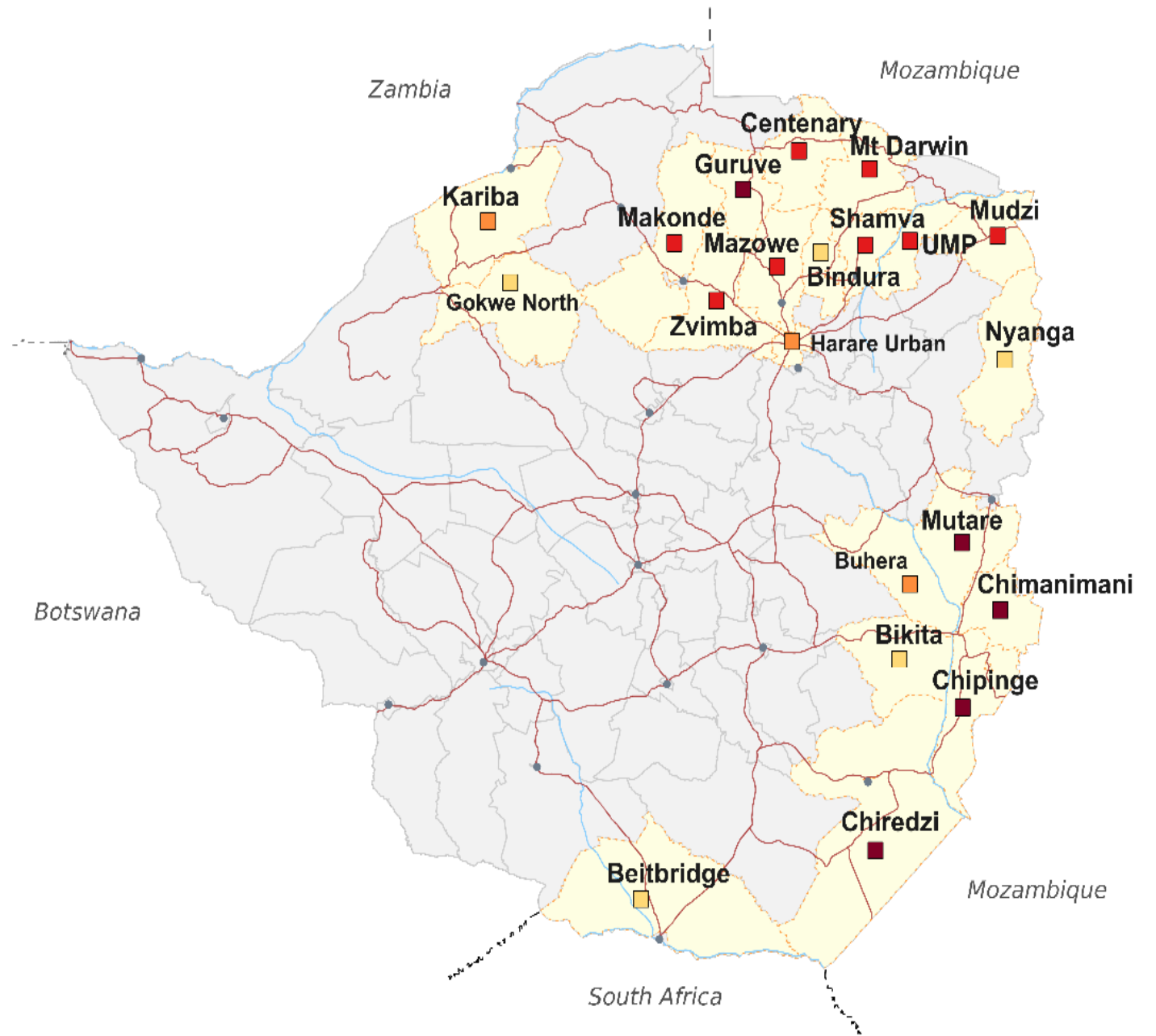
Spatial distribution of reported cholera cases and deaths (as of 26 December 2018)



| HOTSPOT TYPE        | PROVINCE            | DISTRICT         |         |
|---------------------|---------------------|------------------|---------|
| TYPE 1              | MANICALAND          | CHIPINGUE        |         |
|                     |                     | MUTARE           |         |
|                     |                     | CHIMANIMANI      |         |
| MASHONALAND CENTRAL | MASHONALAND CENTRAL | GURUVE           |         |
|                     |                     | MASHINGO         | CHIREZI |
| TYPE 2              | MASHONALAND WEST    | MAKONDE          |         |
|                     |                     | ZVIMBA           |         |
|                     | MASHONALAND CENTRAL | MT DARWIN        |         |
|                     |                     | CENTENARY        |         |
|                     |                     | SHAMVA           |         |
|                     | MASHONALAND EAST    | MASHONALAND EAST | MAZOWE  |
|                     |                     |                  | MUDZI   |
|                     |                     | UMP              |         |

Location of cholera foci:

- Along the border with Mozambique – Chiredzi, Chipingue, Chimanimani, Mutare, Nyanga, Mudzi, Mt Darwin and Centenary
- Along the border with Zambia and Lake Kariba– Kariba
- On main roads to / from Harare – Zvimba, Mazowe, Makonde, Guruve, Bindura, Shamva and UMP
- On the border with South Africa - Beitbridge



Cholera hot spot type ■ T1 ■ T2 ■ T3 ■ T4

# CURRENT STATUS OF NCP

- Status of NCP : Not developed yet but for WASH 2 docs in process for 6 months (cholera outbreak response plan) and 12 months (cholera outbreak emergency preparedness and response plan 2019)
- Cholera secretariat initiated recently to drive the elaboration of future NCP...
- Key stakeholders involved (government, local actors, international actors): Wide consultation, from top level to more executive bodies...
- Coordination mechanism in place to support NCP: monthly steering committee and mobilization of the different clusters for contribution... UNICEF leading WASH
- Specifics related to the WASH section of the NCP
  - End of emergency, need to switch to a different process
  - Need to develop a new dynamic, different frequency of meeting
  - In Harare: City Of Harare, Ministry of Water, MOH... Civil society... humanitarian organizations

# CHALLENGES FACED

- The country has limited capacities (human, financial, mobility) to react to this challenge
- In Harare, structural rehabilitation versus development of alternatives
- Need additional assessments to target precisely the relevant places in Harare and upcountry (more detailed than suburb or districts)
- To validate a ranking in order to keep realistic
- To develop sustainable package (prevention) versus emergency package (respond)...

# IN COUNTRY SUPPORT REQUIREMENTS

- Vaccination now, 3 years immunization, preventive in upcountry, and new vaccination in 2022
- Workshop about cholera control monitoring / MOH done one
- Higherlife foundation supporting Cholera National Secretariat
- Part of the clusters are operational while some others must be activated



# Thank you

Together we can  
**#endcholera**



GLOBAL TASK FORCE ON  
**CHOLERA CONTROL**