



GLOBAL TASK FORCE ON
CHOLERA CONTROL

DEVELOPMENT AND IMPLEMENTATION OF
MULTISECTORAL NATIONAL CHOLERA PLANS

Margot Nauleau
25 March 2020

NCPs TO ROLL OUT THE *GLOBAL ROADMAP* IN COUNTRIES

By 2030 – 20 countries eliminate cholera and cholera mortality is reduced by 90%.



GLOBAL FRAMEWORK

To achieve the objectives of the Roadmap we need:

- Countries to commit – at the highest level of governments -to controlling cholera. National goals should be defined.
- Partners to engage and provide technical support to countries to implement their action plans / activities
- Donors to commit to supporting financially the priorities defined by countries

→ **National Cholera Plans will set the parameters for the implementation of the Global Roadmap at national level**

NATIONAL FRAMEWORKS

ATTRIBUTES OF A NATIONAL CHOLERA PLAN (NCP)



Country-led

NCP development, implementation, and monitoring is owned and led by countries



Multi-year

Multi-year document that defines a country's goal and strategic objectives for cholera control/elimination



Multi-sectoral, targeted & coordinated at the highest level

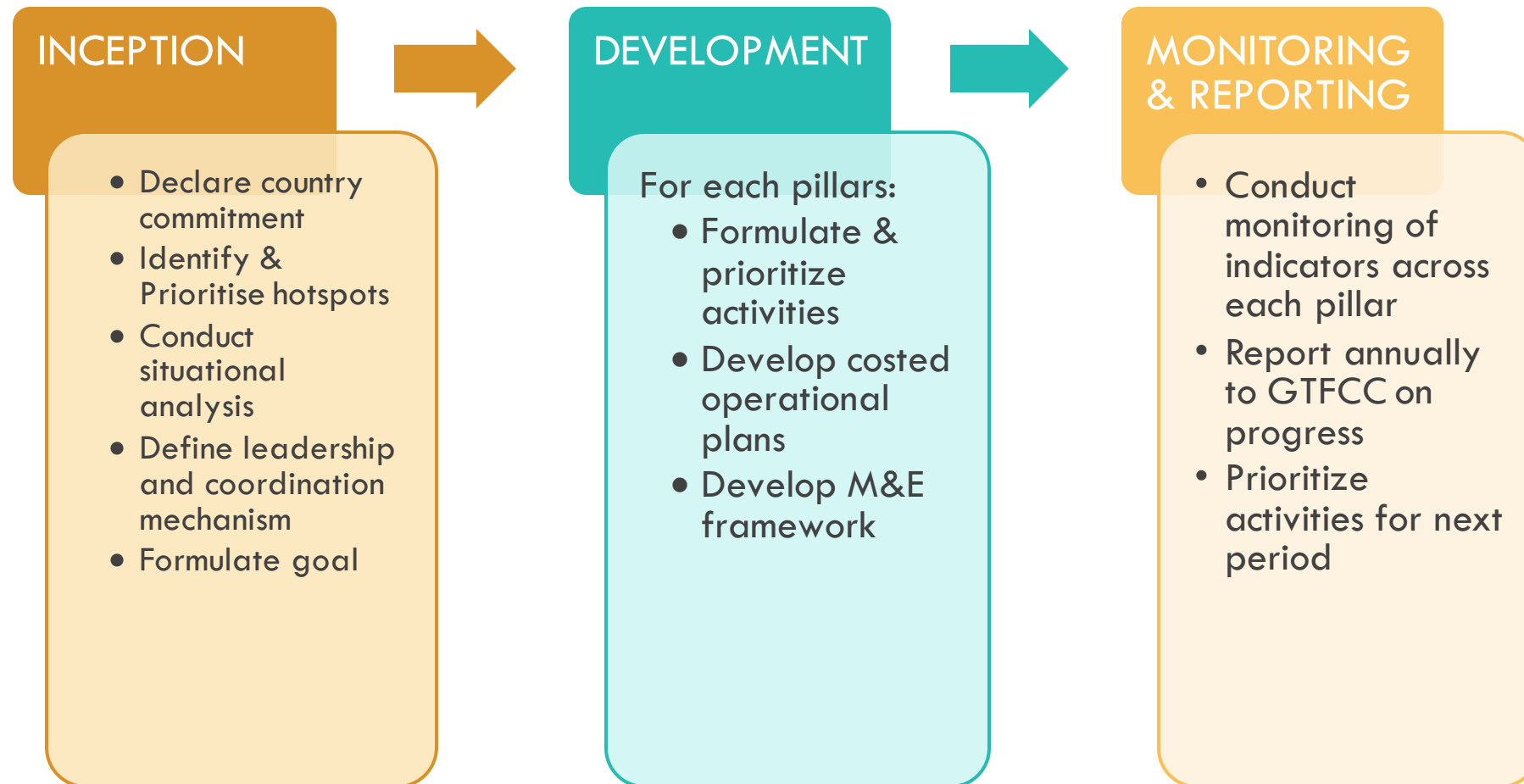
Coordinated at the highest level of government to ensure that a multisectoral approach (involvement of health sector, WASH sector, infrastructure, finance) is implemented in cholera hotspots



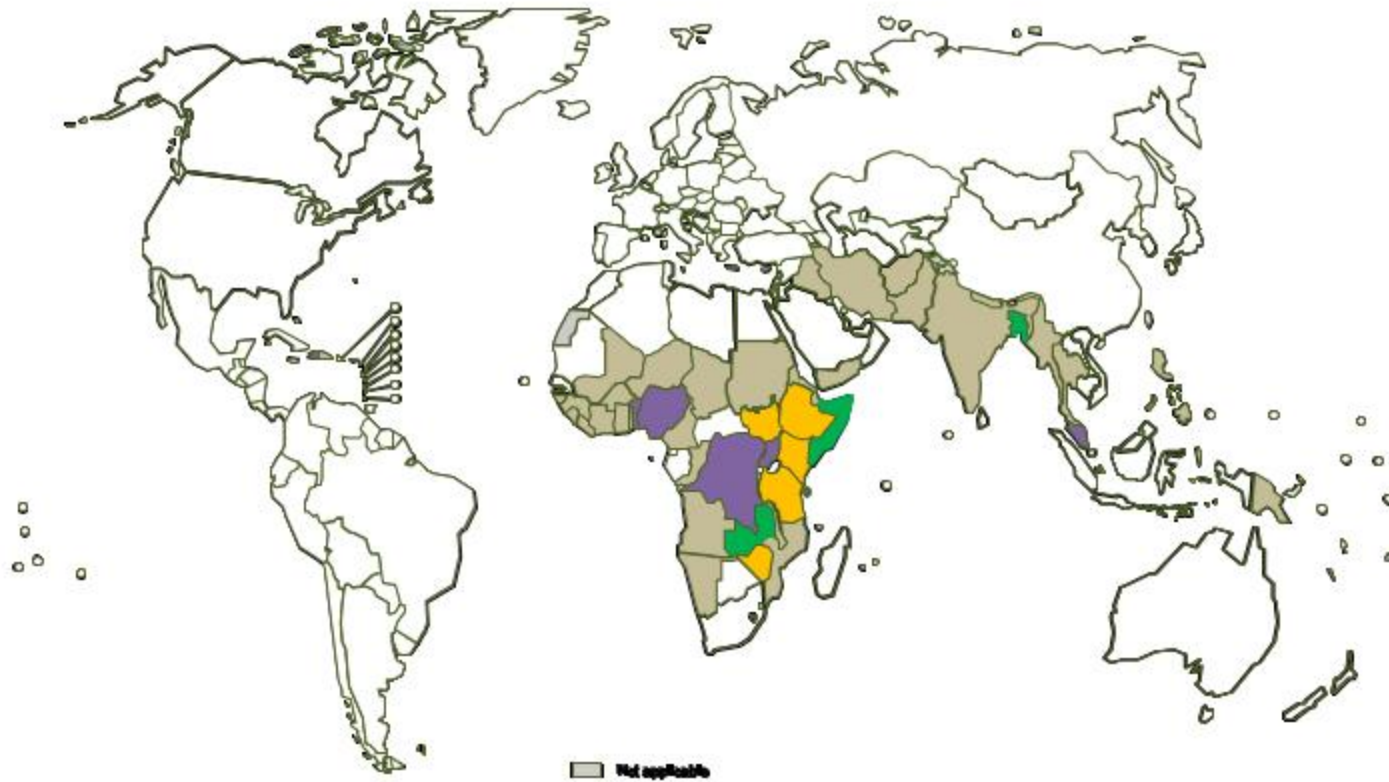
Dynamic & Adaptable

Dynamic plan where the activities and budgets are monitored and revised on a regular basis

NCP DEVELOPMENT — A STEP BY STEP APPROACH

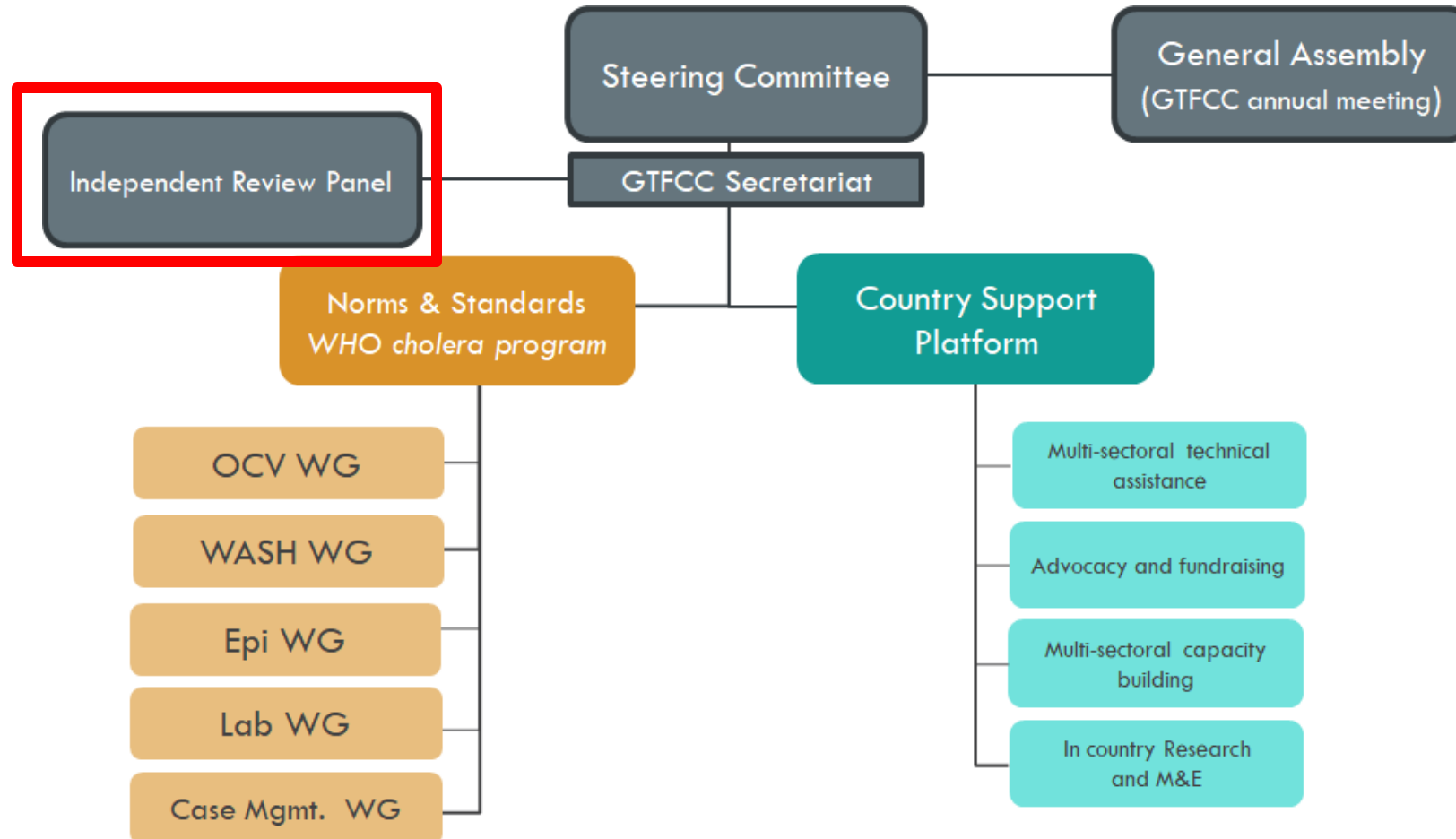


LANDSCAPE OF NATIONAL CHOLERA PLANS



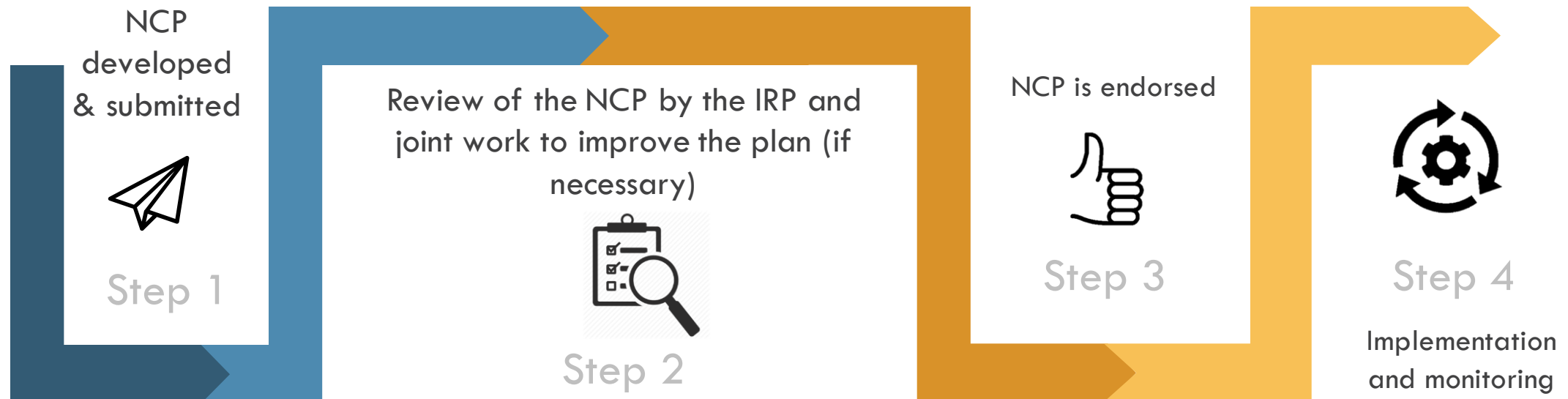
- Countries targeted by the Global Roadmap (47)
- Existing Cholera Plan (pre-Roadmap) (5)
- Engaged in NCP process (5)
- Final or launched NCP (post Roadmap) (4)

OPERATIONAL MODEL



NCP REVIEW PROCESS

Collaborative process between GTFCC and countries



THE CRITERIA FOR NCP ENDORSEMENT

PRIMARY CRITERIA



Engagement of all actors in **the multi-sectoral approach** of the Roadmap



Completion of **the situational analysis** according to GTFCC guidance



Operational plans with activities and budgets for surveillance, patients care, OCV, WaSH, and community engagement.

SECONDARY CRITERIA

Detailed considerations on:

- Multisectoral approach and coordination
- Situational analysis
- Surveillance
- Management of care
- Oral Cholera Vaccines
- Water, sanitation and hygiene
- Community Engagement

BENEFITS FOR THE COUNTRIES



Visibility



Increased Credibility



Coordination



Access to OCV Stockpile



Surveillance



Technical support and guidance –
human resources, implementation
support, monitoring and evaluation

ANNUAL REPORTING

Country Annual reports

- ✓ Cholera cases and death
- ✓ Annual review of cholera hotspots
- ✓ WASH coverage in hotspots
- ✓ Functionality of the multisectoral coordination
- ✓ Level of funding to implement the NCP

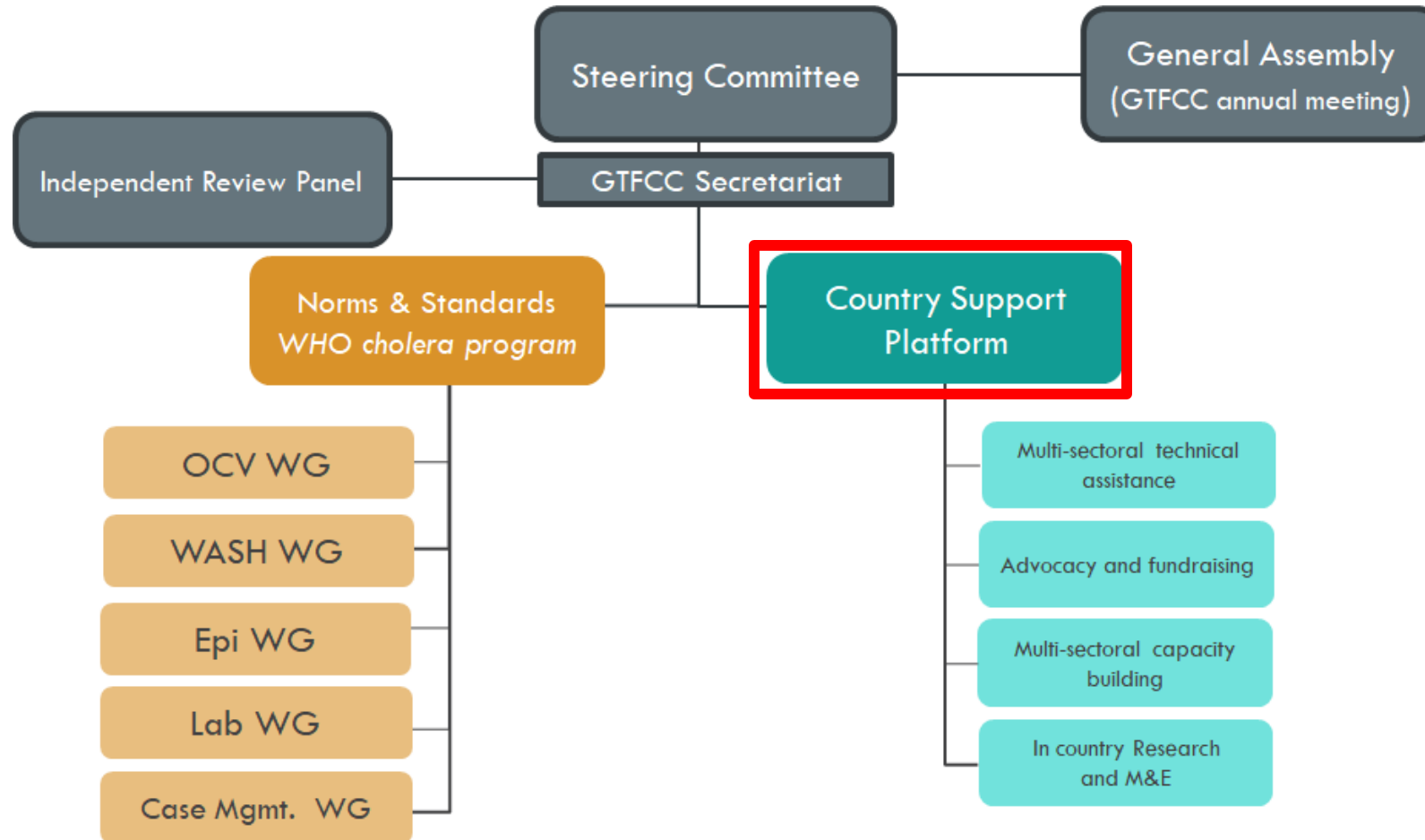
Global Annual Report on the Implementation of the Roadmap

Published on GTFCC website

Presented at the Annual Meeting



OPERATIONAL MODEL



COUNTRY SUPPORT PLATFORM

Mobilization & coordination of technical expertise

01



02



Training of experts for GTFCC partner organizations

Support to advocacy & fundraising

03



04



Support to Monitoring & Evaluation



GLOBAL TASK FORCE ON
CHOLERA CONTROL

THANK YOU